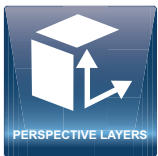


# Ascender 48 - 4K - PL - Ref. ASC4806-4K-PL

Powerful multi-screen Seamless Switcher based on Analog Way's LiveCore™ platform, state-of-the-art processing, exclusive Perspective Layers feature, Soft Edge and 4K capabilities for top-notch presentations



## INPUTS



## OUTPUTS



## FEATURES

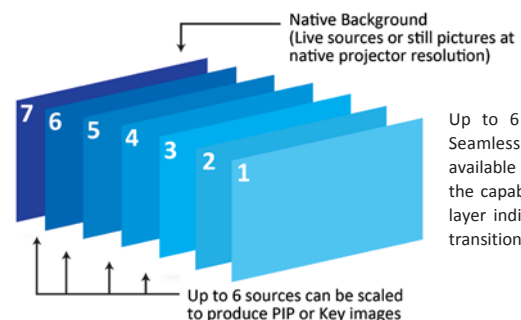


### Ascender 48 - 4K - PL at a glance

- ▶ LiveCore™ platform
- ▶ 12 Seamless inputs and 42 input plugs (incl. 3 x 4K HDMI plugs)
- ▶ Input format up to 4K 30Hz 4:4:4
- ▶ Output format up to 4K 30Hz 4:4:4, 4K 60Hz 4:2:0 and four quadrant 4K 60Hz 4:4:4
- ▶ Independent Preview/Mosaic/Monitoring output
- ▶ Full live Preview of all sources (Preview/Mosaic/Monitoring)
- ▶ Customization of monitoring layouts (Up to 8 templates stored)
- ▶ 6 True-Seamless scaled layers or 3 True-Seamless Perspective Layers + 1 native background layer per output
- ▶ Advanced Layer Management
- ▶ Rotation capability in output (step by 90 degrees)
- ▶ Outstanding visual effects (Flying, Cut and Fill ...)
- ▶ Collaborative architecture
- ▶ Ruggedized and heavy-duty design
- ▶ User-friendly and intuitive Graphic Interface
- ▶ Remote Services
- ▶ Additive modularity (Heterogeneous link)
- ▶ Associative modularity (via Vertige™)

### Option

- ▶ OPT-SPS: Swappable Power Supply
- ▶ OPT-LINK: Replacement LiveCore™ Link Cable (spare)
- ▶ OPT-KIT3xLINK: Set of 3 LiveCore™ Link Cables
- ▶ SPU001: Secure Power Unit
- ▶ 500133: Extension Warranty 2 years (5 years total)



Up to 6 independent true-seamless scaled layers are available per screen, offering the capability to control each layer individually in time and transition.

### To Control Ascender 48 - 4K - PL

- ▶ Web-based Remote Control Software (Web RCS)
- ▶ VRC300: Vertige™
- ▶ SB80-2: Shot Box² & SB124T-2: Control Box²
- ▶ AMX and Crestron Drivers



Video available on YouTube or on [www.analogway.com](http://www.analogway.com)

\*Available on [www.analogway.com](http://www.analogway.com)



**ANALOG WAY®**  
Pioneer in Analog. Leader in Digital

## Key features

### ▶ 12 Seamless inputs and 42 input plugs

- 6 x HDMI (incl. 3 HDMI 4K 30Hz)
- 9 x DVI-I (3 DVI Dual Link included)
- 3 x DisplayPort (4-Lanes)
- 12 x 3G/HD/SD-SDI
- 12 x Universal Analog (6x HD15 & 6xDVI-A)

### ▶ 4 outputs with 5 output plugs

- Universal Analog (HD15 & DVI-A)
- DVI-I (DVI Dual Link available on output #1 and #3, HDMI 4K available on outputs #2 & #4 through DVI connectors)
- 3G/HD/SD-SDI
- Video Optical SFP module cage

### ▶ Features & Effects

- Up to 6 True-Seamless scaled layers per screen / up to 3 True-Seamless Perspective Layers per screen
- Independent Native Background
- 144 presets memories and 144 master presets memories
- 100 memories for frames and logos
- Frames and Logos: fully resizable
- True A/B mix
- Output capability up to 2560x1600 and 4K
- 4 Customizable display layouts: Full Preview, Live Mosaic, Monitoring and Recording
- Display configurations: Mixer, Hybrid, Hard Edge & Soft Edge
- Additive modularity: combine 2 **Ascender 48 - 4K - PL** to share/add inputs & outputs up to 24x8
- Associative modularity: synchronize up to 4 units to create blends with to 16 outputs
- Layer border: Edge/Smooth/Shadow/Smooth Edge (Edge: color/width/height)
- New tools box for layers: Transitions, Effects, Speed, Timing, Faders, Strobe, Mirror,...
- Numerous effects: Cut, Dissolve, Slide, Wipe, Stretch, Circle, Depth, Flip, Flying Curve, Background Cut, Transparency, Luma/Chroma Key, DSK, Cut and Fill
- Web-based Remote Control Software for multiple users: **Web RCS**
- Remote Tools

## Web RCS

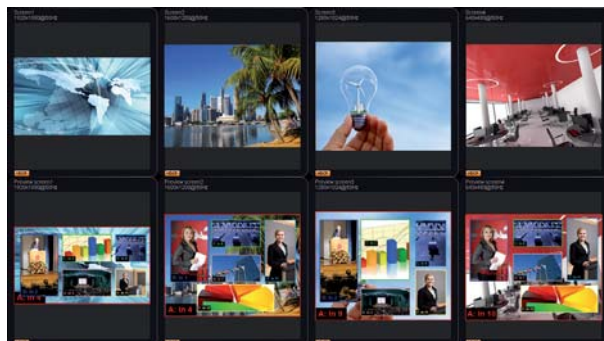


- The **Web RCS** offers a user-friendly graphic interface consisting of 3 independent sections: Setup, Edit and Live. A Preconfig. mode indicates how to easily configure the device step by step.
- With dynamic snapshots of the connected sources available in the interface, the intuitive dashboard allows operators to fully prepare their shows and control them live during their events.
- An innovative Sequences mode allows easy organization of presets through drag and drop operation.

In addition to its four main outputs, **Ascender 48 - 4K - PL** features an independent Dual-Link output for monitoring purposes.

This output offers versatile and customizable display options, ensuring effective monitoring and flawless show control. All images are live and can be labeled through Web Remote Control Software. Additional information on each source is also available directly on the live video windows.

## Full Preview



## Live Mosaic



### Dimensions:

- ▶ D 21.41" x W 17.51" x H 6.97" ("Rack ears" not included)
- ▶ D 544 mm x W 444.8 mm x H 177 mm ("Rack ears" not included)

### Weight:

- ▶ 19 kg
- ▶ 41.89 lbs

### Power Supply:

100-240 VAC ; 4.8A ; 50/60Hz ; 285 W

### Supplied with:

- ▶ 1 x Power supply cord
- ▶ 1 x Ethernet cross cable (for device control)
- ▶ 1 x MCO 10 pin connector
- ▶ 1 x Web-based Remote Control Software included and hosted on the device
- ▶ 1 x Rack mount kit (front ears and rear support)
- ▶ 1 x User Manual (PDF version)\*
- ▶ 1 x Quick Start Guide\*

### Warranty:

3-year warranty on parts and labor back to factory.



\* All User Manuals and Quick Start Guides are also available on [www.analogway.com](http://www.analogway.com)

ⓘ Specifications subject to change without prior notice

All technical specifications are available on our website