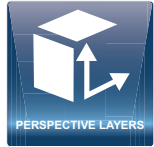


LiveCore™ Output Expander 32 - 4K - PL - Ref. LOE032-4K-PL

Expansion module gives 4 additional Program outputs and 1 Operator/Aux output for linkable LiveCore™ units



OUTPUTS

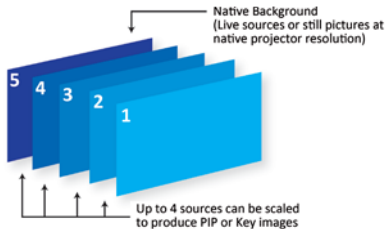


FEATURES



LiveCore™ Output Expander 32 - 4K - PL at a glance

- ▶ 4 Program outputs
- ▶ Output format up 4K 30Hz 4:4:4, 4K 60Hz 4:2:0 and four quadrant 4K 60Hz 4:4:4
- ▶ 1 independent Operator/Aux output
- ▶ Full Preview of any sources of the linked chassis (Preview/Mosaic/Monitoring)
- ▶ Customization of monitoring layouts/Aux output (up to 8 templates stored)
- ▶ 4 true-Seamless scaled layers or 2 True Seamless Perspective Layers + 1 native background per output
- ▶ Advanced Layer Management
- ▶ Rotation capability in output (90 degrees)
- ▶ Outstanding visual effects
- ▶ Ruggedized and heavy duty design
- ▶ Additive modularity: compatible with **SMX12x4**, **ASC1602-4K**, **ASC3204-4K-PL**, **ASC4806-4K-PL**



Up to 4 independent true-Seamless scaled layers are available per screen, offering the capability to control each layer individually in time and transition.

To control the LOE032-4K-PL:

The LOE032-4K-PL is controlled through the LiveCore™ device it is linked to:

- ▶ Web-Based Remote Control Software (Web RCS)
- ▶ VCR300: Vertige™
- ▶ SB80-T: Shot Box² & SB124T-2: Control Box²
- ▶ AMX and Creston drivers*

Key features

▶ 4 outputs with 5 output plugs

- Universal analog (HD15 & DVI-A)
- DVI-I (DVI Dual Link available on outputs #1 and #3)
- 3G/HD/SD-SDI
- 3G-SDI Optical SFP module cage

▶ Features & Effects

- Up to 4 true-Seamless scaled layers per screen / Up to 2 True Seamless Perspective Layers per screen
- Independent Native Background
- 100 nonvolatile memory slots for frames and logos
- Frames and Logos: fully resizable
- True A/B mix
- Output capability up to 2560x1600 and 4K
- Customizable 5th output with 4-display options: Full Preview, Live Mosaic, Monitoring and Recording
- Display configurations: Mixer, Hybrid, Hard Edge & Soft Edge
- Additive modularity: Combine one linkable LiveCore™ unit with one LOE032-4K-PL to share/add inputs & outputs up to 12x8+2
- Layer border: Edge/Smooth/Shadow/Smooth Edge (Edge: color/width/height)
- New toolbox for layers: Transitions, Effects, Speed, Timing, Faders, Strobe, Mirror,...
- Numerous effects: Cut, Dissolve, Slide, Wipe, Stretch, Circle, Depth, Flip, Flying Curve, Background Cut, Transparency, Luma/Chroma Key, DSK, Cut and Fill
- Web-based Remote Control Software for multiple users: Web RCS
- Remote tools
- Remote Services

Options

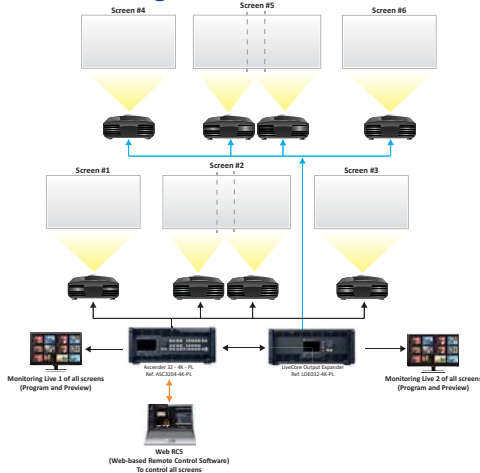
- ▶ OPT-SPS: Swappable Power Supply
- ▶ OPT Link: Replacement of LiveCore™ Link Cable (spare)
- ▶ OPT-KIT3xLINK: Set of 3 LiveCore™ Link Cables
- ▶ SPU001: Secure Power Unit

*Available on www.analogway.com

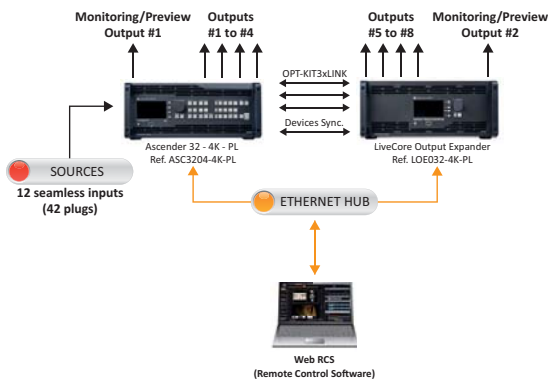


ANALOG WAY®
Pioneer in Analog. Leader in Digital

► Multi-screen configuration



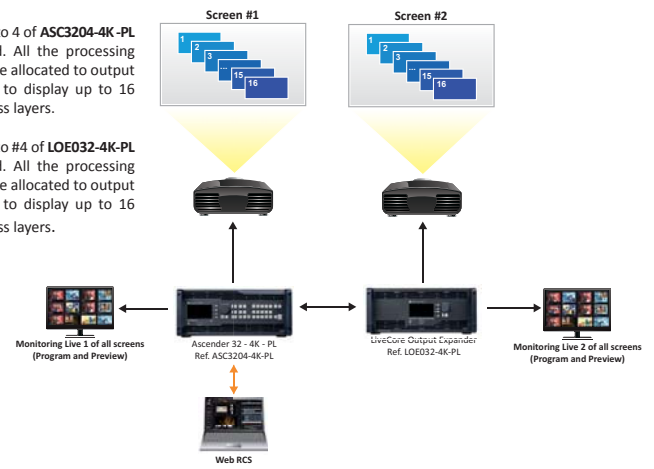
► Additive Modularity



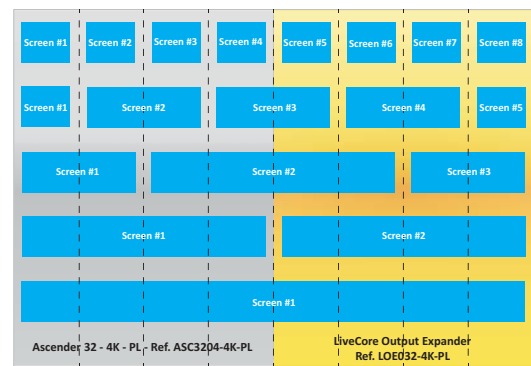
► Advanced Layer Management

Outputs #2 to #4 of **ASC3204-4K-PL** are disabled. All the processing resources are allocated to output #1 in order to display up to 16 true seamless layers.

Outputs #2 to #4 of **LOE032-4K-PL** are disabled. All the processing resources are allocated to output #1 in order to display up to 16 true seamless layers.

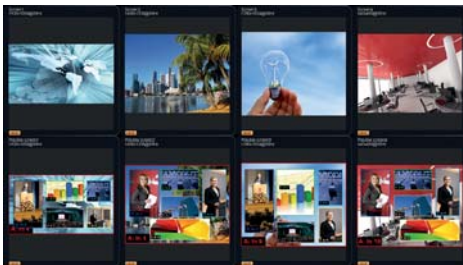


► Display configurations with 8 outputs



In addition to its four main outputs, **LiveCore™ Output Expander 32 - 4K - PL - Ref. LOE032-4K-PL** features an independent Dual-Link output for monitoring purposes. This output offers versatile and customizable display options, ensuring effective and flawless show control. All images are live and can be labeled through the Web Remote Control Software. Additional information on each source is also available directly on the live video windows.

Full Preview



Live Mosaic



- The **Web RCS** offers a user friendly graphic interface consisting of 3 independent sections: Setup, Edit and Live. A Preconfig. Mode indicates how to easily configure the device step by step.
- With dynamic snapshots of the connected sources available in the interface, the intuitive dashboard allows operators to fully prepare their shows and control them live during their events.
- An innovative sequences mode allows easy organization of presets through drag and drop operation.

Dimensions:

- D 21.41" x W 17.51" x H 6.97" ("Rack ears" not included)
- D 544 mm x W 444.8 mm x H 177 mm ("Rack ears" not included)

Weight:

- 18.4 Kgs
- 40.56 lbs

Power Supply:

100-240 VAC ; 4.8A ; 50/60Hz ; 285 W

Supplied with:

- 1 x Power supply cord
- 1 x OPT-KIT3xLINK
- 1 x 1,8m long RJ45 cable
- 1 x MCO 10 pin connector
- 1 x Rack mount kit (front ears and rear support)
- 1 x Quick Start Guide*

Warranty:

3-year warranty on parts and labor back to factory.



* All User Manuals and Quick Start Guides are also available on www.analogway.com



Specifications subject to change without prior notice

All technical specifications are available on our website